

Movetia Annual Higher Education Event 2019
21 November 2019



CHARM-EU: a new approach to make mobility **the norm**

Katalin Anna NÉMETH

Eötvös Loránd University, Hungary

Outline

European Universities Initiative

Introducing CHARM-EU

Mobility as a norm?

European Universities Initiative

imagine...

„European Universities are **transnational alliances** that will become the **universities of the future**, promoting **European values** and identity, and revolutionising the **quality** and **competitiveness** of European higher education.”

- ✓ All types of HEIs covering a **broad geographical scope**
- ✓ Long-term strategy focused on **sustainability, excellence** and **European values**
- ✓ Student-centered curricula, building own programmes, experiencing **mobilities at all levels**
- ✓ **Challenge-based approach**, co-operate in inter-disciplinary teams to tackle the biggest issues of Europe

https://ec.europa.eu/education/education-in-the-eu/european-education-area/european-universities-initiative_en



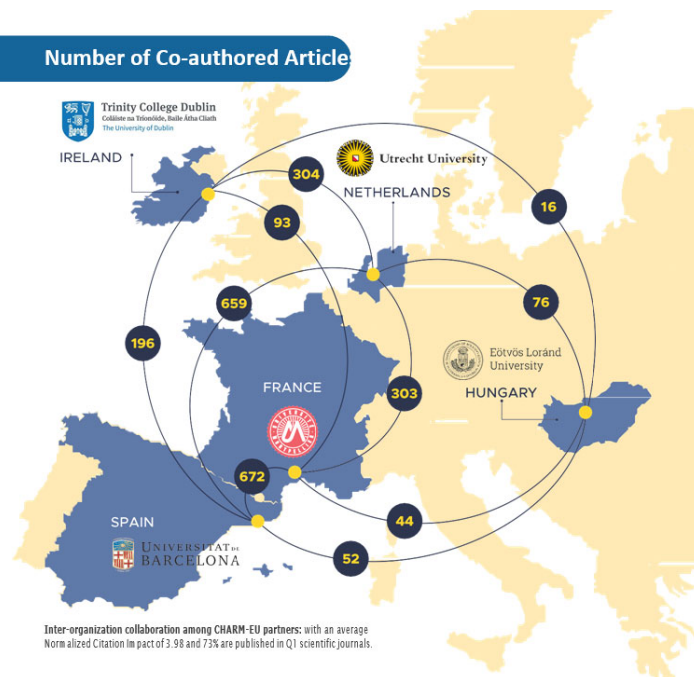
CHARM-EU



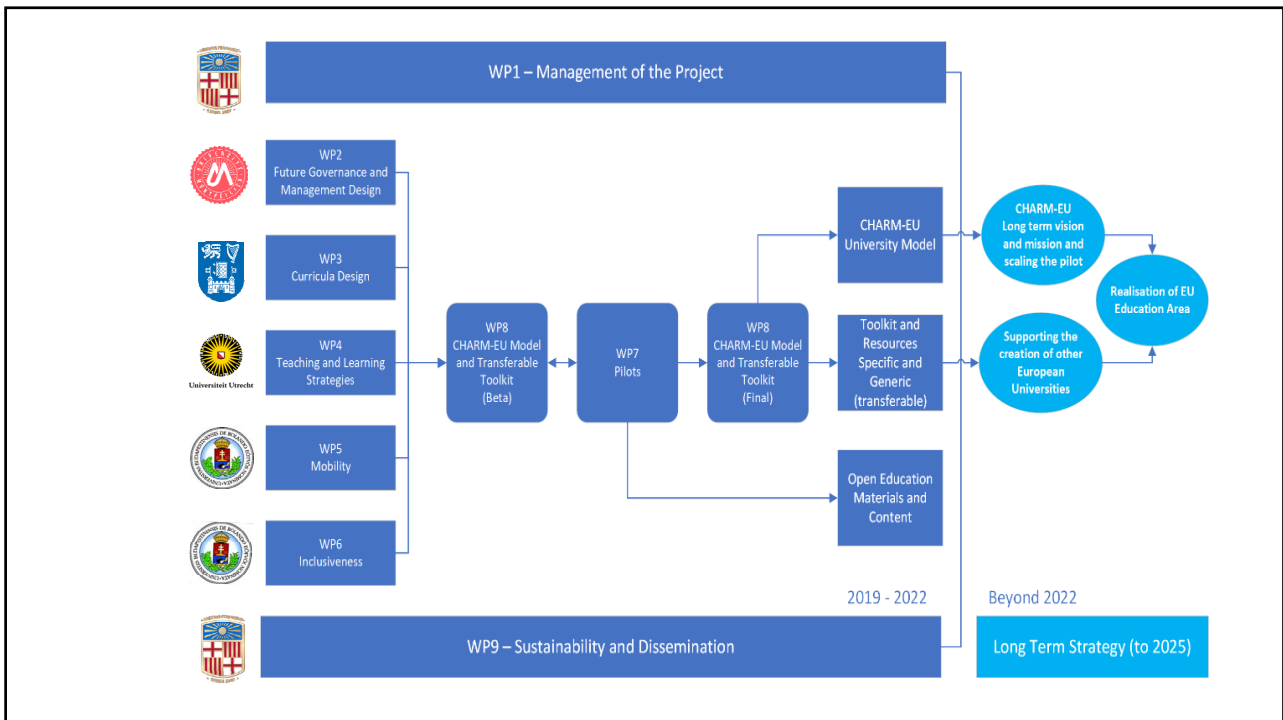
CHallenge-driven
Accessible
Research-based
Mobile
European
University



Number of Co-authored Article



Inter-organization collaboration among CHARM-EU partners: with an average Normalized Citation Impact of 3.98 and 73% are published in Q1 scientific journals.



A flash on Curriculum design & Teaching and learning

AREA	TRADITIONAL	CHARM-EU
CAMPUS	Single Institution	Multiple Institutions
DISCIPLINE	Single Discipline or Interdisciplinary	Multidisciplinary or Transdisciplinary
CURRICULUM	Teacher Defined	Student Defined
MOBILITY	Add On	Embedded as the norm
CONTENT	Content Model	Challenge Model
ASSESSMENTS	Teacher Defined	Student Defined, Authentic
COLLABORATION	Solitary or with peers	Teams with peers, researchers, businesses, civil society, citizens

Mobility as *the norm*

What is mobility?

How it is made the norm
in CHARM-EU?

Erasmus mobility increases students'

- ✓ intercultural and interpersonal skills and competences,
- ✓ self-confidence,
- ✓ ability to achieve goals,
- ✓ social and cultural openness,
- ✓ language skills.

Erasmus Impact Study 2019

Traditional and non-traditional mobility types – some examples

	Student	Teacher	Staff	Combined
Length (short, mid-term, long)				
<i>Realization</i> (physical, virtual, blended)				
No. of participants (individual, in pairs, in groups)				
Study cycle				
Activity type (studies, traineeship, research, teaching, training, job shadowing etc.)				

Back to the Earth...

Main challenges to be solved:

- Funding
- Internal processes
- Housing
- Inclusivity while obtaining key competences
- Sustainability

Thank you for your kind attention!

Stay tuned...

<http://charm-eu.eu/en>
https://twitter.com/charm_eu

